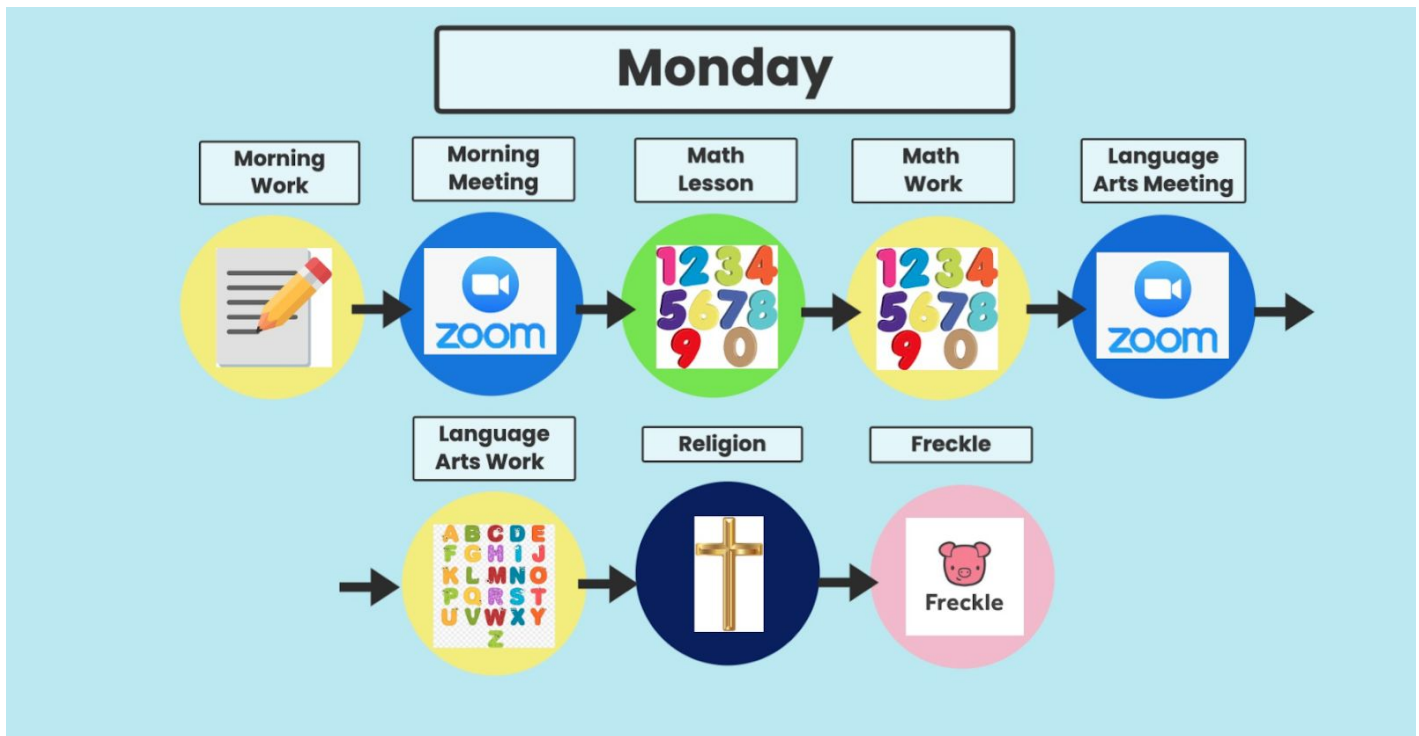


K-2nd:

Students in grades K-2 will receive a similar schedule to the one below, sent out each day, on SeeSaw. A link will be attached (see right) to each of the colored circles, which will take the student directly to the work, activity, or video assigned.



Live academic lessons will alternate between Math groups and Reading/ELA groups. (M/W/F = ELA and T/Th = Math)



	Monday	Tuesday	Wednesday	Thursday	Friday
Small Group ELA - 3x	10:00-11:00 (mini lessons in groups)		10:00-11:00 (mini lessons in groups)		10:00-11:00 (mini lessons in groups)
Small Group Math - 2x		10:00-11:00 (mini lessons in groups)		10:00-11:00 (mini lessons in groups)	
Whole Group Homeroom - 5x	9:00-9:15	9:00-9:15	9:00-9:15	9:00-9:15	9:00-9:15



DISTANCE LEARNING 2020-2021 SCHEDULES

3rd-4th grade Schedule:

	Monday	Tuesday	Wednesday	Thursday	Friday
Whole Group Homeroom AM - 5x	9:15-9:30	9:15-9:30	9:15-9:30	9:15-9:30	9:15-9:30
Whole Group Homeroom PM - 5x	1:30-1:45	1:30-1:45	1:30-1:45	1:30-1:45	1:30-1:45
Whole Group ELA - 2x		11:00-11:20 (+20 min O.H.)		11:00-11:20 (+20 min O.H.)	
Whole Group Math - 3x	11:00-11:20 (+20 min O.H.)		11:00-11:20 (+20 min O.H.)		11:00-11:20 (+20 min O.H.)

*O.H. = Office Hours

K-4th Suggested Specials Schedule:

Grade Level	Monday	Tuesday	Wednesday	Thursday	Friday
K-2	Spanish	PE	Art	Media	Music
3-4	Music	Media	Art	PE	Spanish